

1231 Wycliff Avenue

DALLAS, TEXAS 75207



For leasing information —
KOBALT LEASING 214.441.7500



1231 Wycliff Avenue, located at the corner of Irving Blvd and Sylvan Avenue sitting on The Strand trail system in Dallas, Texas, is a 62,611 SF center serving the Dallas Design District, Market Center and Medical District.

The center offers great access and visibility, high ceilings, ample surface parking and is positioned in the fast growing area of The Design District.



62,611
TOTAL SF

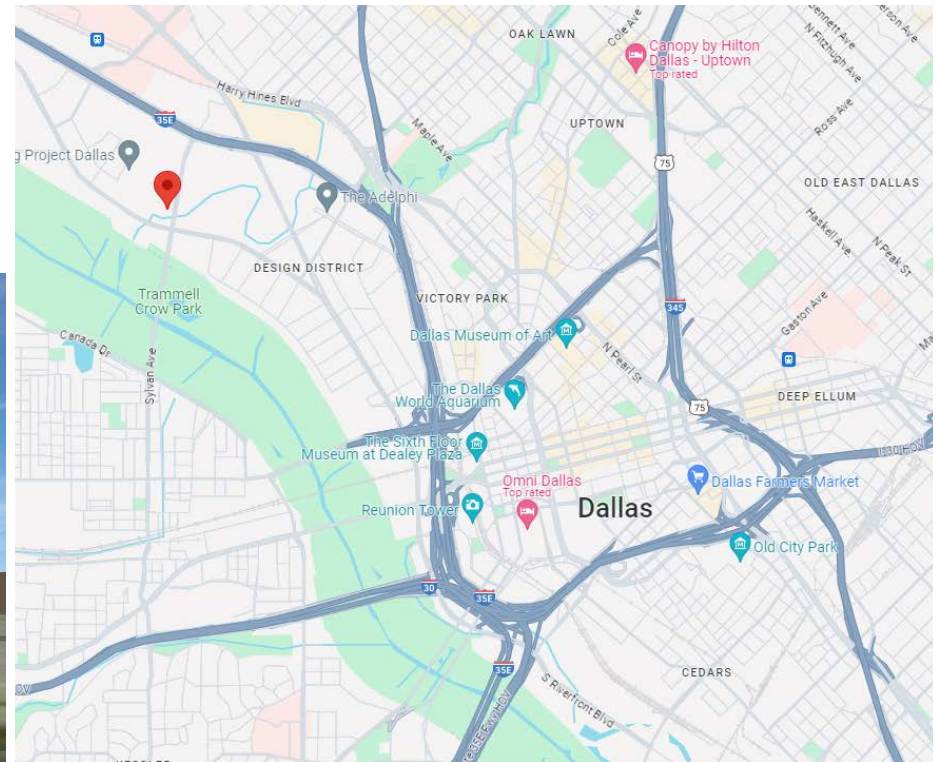
2/1000 SF
PARKING RATIO

14,844 VPD
Irving Blvd

12,485 VPD
Sylvan Avenue



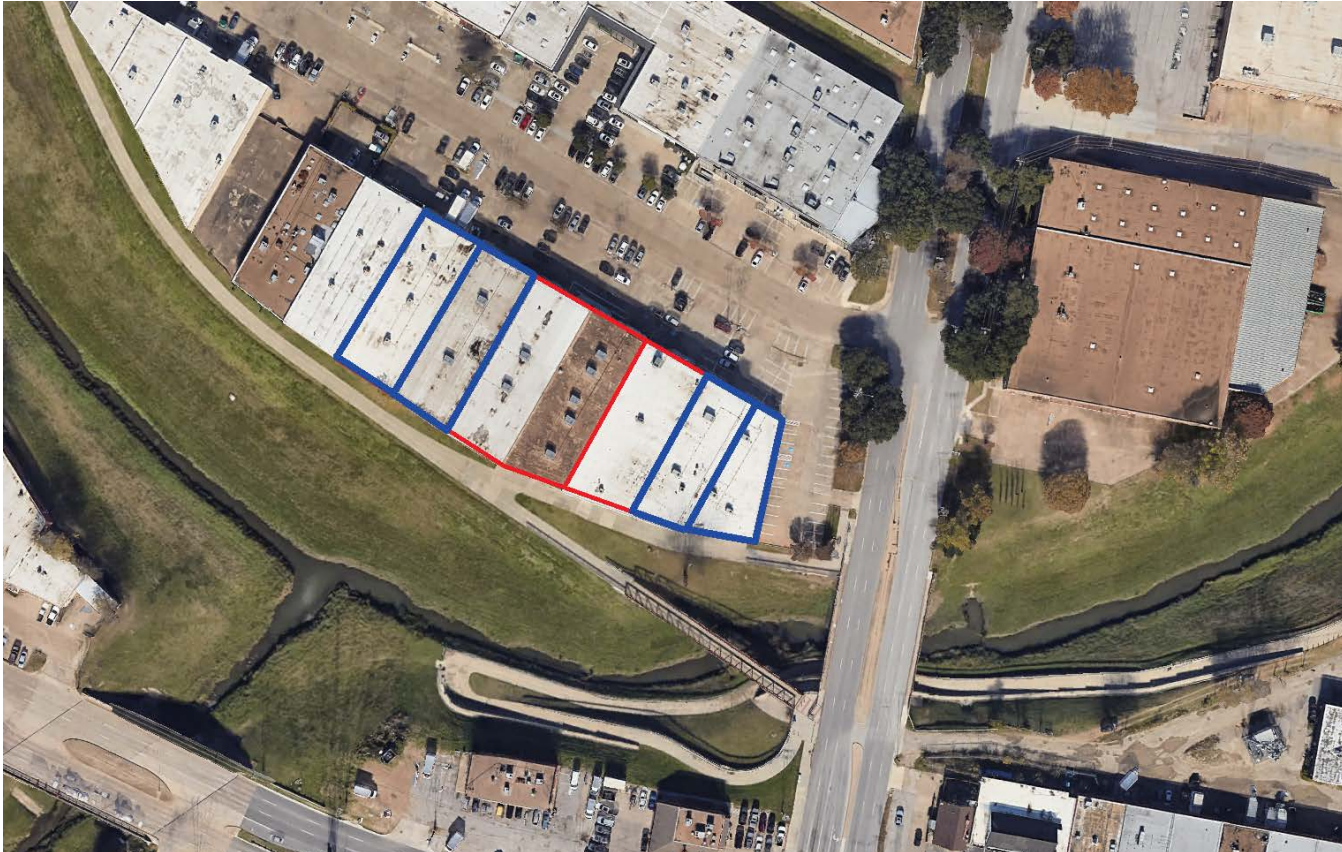
	1 MILE	3 MILES	5 MILES
Estimated Population	8,712	148,625	355,563
Average Household Income	\$76,247	\$107,355	\$104,624
Total Housing Units	863	69,246	144,175
Median Home Value	\$184,227	\$380,560	\$389,834



For leasing information —
KOBALT LEASING 214.441.7500



Site Map



Suite	SF	Tenant
1231 Wycliff, Suite 100	6,180	VACANT
1231 Wycliff, Suite 200	7,164	VACANT
1231 Wycliff, Suite 300	10,005	Norcostco
2223 - 2229 Monitor	19,650	Dallas Auction Gallery
2235 Monitor	9,930	VACANT
2241 Monitor	9,682	VACANT

For leasing information —
KOBALT LEASING 214.441.7500

